



EUROPEAN COMMISSION

Brussels, 19.10.2011
COM(2011) 650 final

VOL 29/33

ANNEX

of XXX

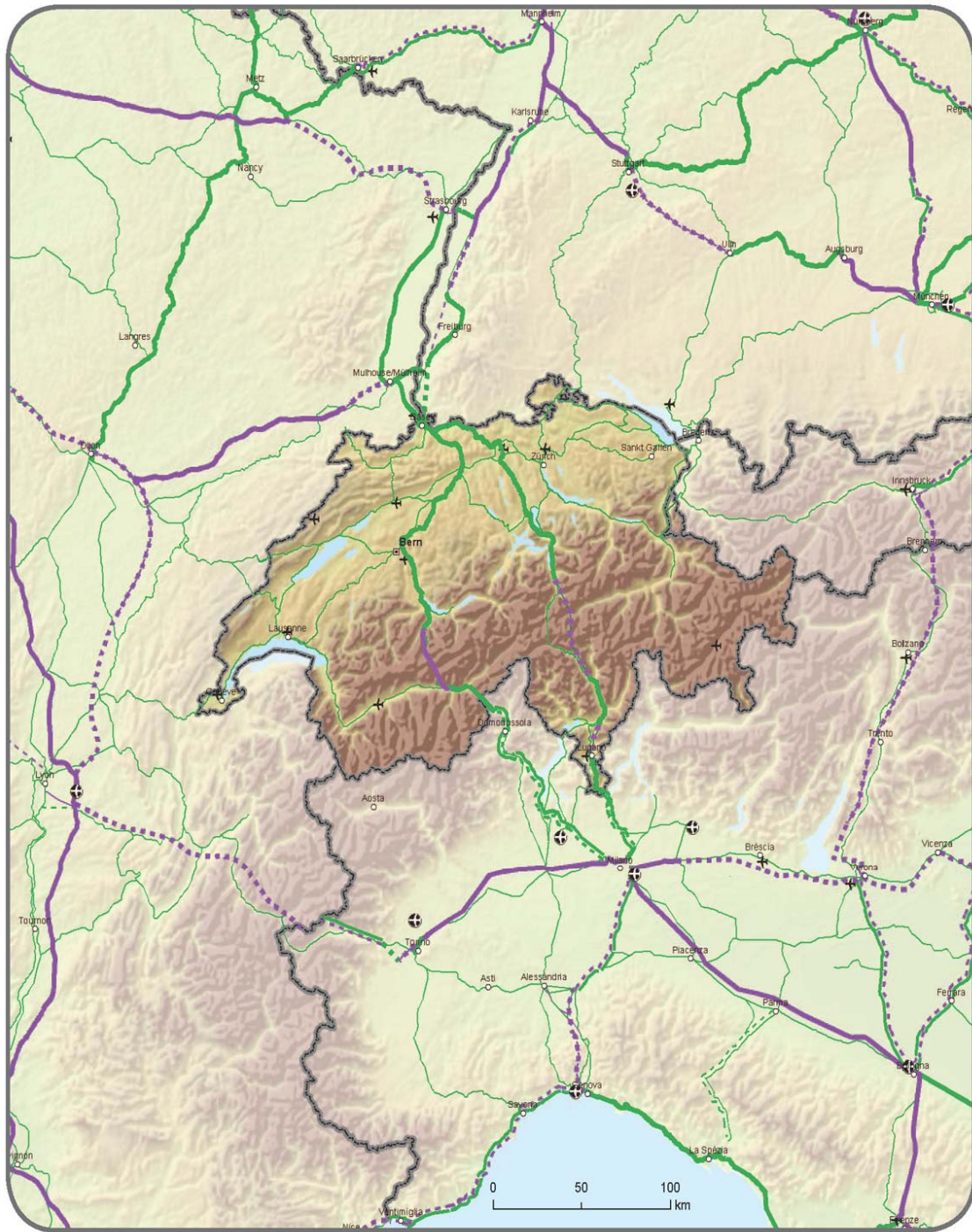
to the

**PROPOSAL FOR A REGULATION OF THE EUROPEAN PARLIAMENT AND OF
THE COUNCIL**

on Union guidelines for the development of the trans-European transport network

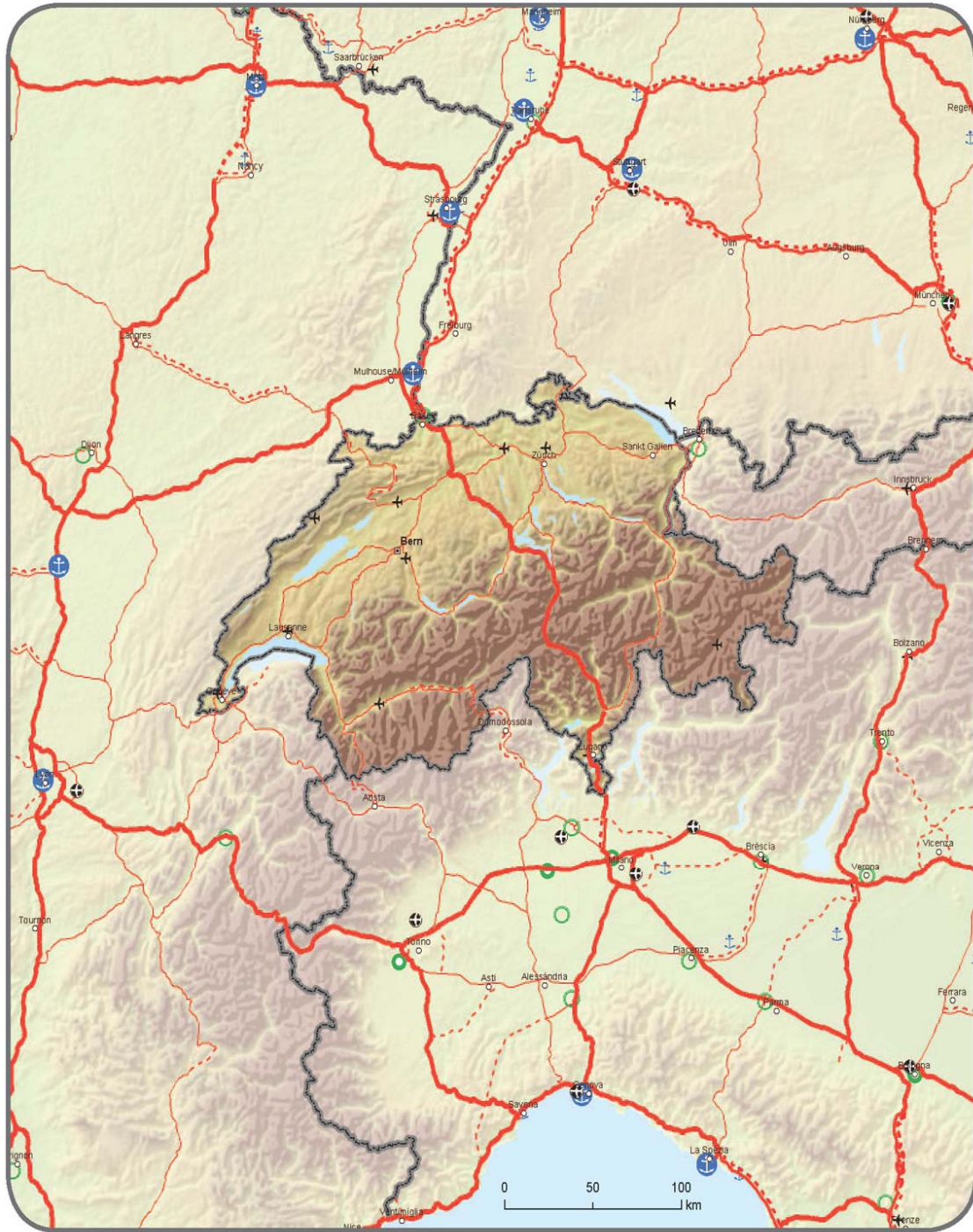
{SEC(2011) 1212}

{SEC(2011) 1213}



Compr.	Core	Compr.	Core	Compr.	Core
Conventional rail / Completed	Conventional rail / To be upgraded	High speed rail / Completed	To be upgraded to high speed rail	Airports	
Conventional rail / Planned		High speed rail / Planned			

TENtec



Road		Ports		Airports	
Compr.	Core	Compr.	Core	Compr.	Core

Road / Completed
 Road / To be upgraded
 Road / Planned
 Ports
 RRT
 Airports

TENtec