



EUROPEAN  
COMMISSION

Brussels, 19.9.2013  
SWD(2013) 335 final

**COMMISSION STAFF WORKING DOCUMENT**  
*Accompanying the document*

**REPORT FROM THE COMMISSION TO THE EUROPEAN PARLIAMENT, THE  
COUNCIL, THE EUROPEAN ECONOMIC AND SOCIAL COMMITTEE AND THE  
COMMITTEE OF THE REGIONS**

**Second Report on the implementation of the national strategy plans and the Community  
strategic guidelines for rural development (2007-2013)**

{ COM(2013) 640 final }

**Table 1: EAFRD expenditure realized 2007-2011, EAFRD total allocation 2007-2013  
and uptake level<sup>1</sup>**

Measures code	Measures	Number of RDP implementing the measures (max 88)	EAFRD 2007-2011	Total allocation 2007-2013 <sup>2</sup>	uptake level
111	Vocational training and information actions	68	298 617 798	999 056 425	30%
112	Setting-up of young farmers	69	1 412 405 220	2 798 849 247	50%
113	Early retirement	49	1 438 388 559	2 604 494 367	55%
114	Use of advisory services	38	45 237 312	340 902 584	13%
115	Setting up of farm management, relief and advisory services	23	13 734 976	86 466 959	16%
121	Modernisation of agricultural holdings	87	5 582 343 255	11 034 896 061	51%
122	Improvement of the economic value of forests	43	138 778 254	591 708 043	23%
123	Adding value to agricultural and forestry products	84	1 929 723 380	5 557 735 472	35%
124	Cooperation for development of new products, processes and technologies	33	48 427 562	334 315 129	14%
125	Infrastructure related to the development and adaptation of agriculture and forestry	74	1 392 533 471	4 903 234 347	28%
126	Restoring agricultural production potential damaged by natural disasters and introducing appropriate prevention actions	17	217 561 916	502 441 164	43%
131	Meeting standards based on Community legislation	16	52 069 512	80 520 102	65%
132	Participation of farmers in food quality schemes	37	37 548 151	209 187 923	18%
133	Information and promotion activities	27	31 274 777	197 345 474	16%
141	Semi-subsistence farming	8	487 185 979	951 110 453	51%
142	Producer groups	11	89 750 229	328 049 108	27%
143	Providing farm advisory and extension services	1	2 453 863	131 773 438	2%
144	Restructuring due to reform of common market organization	2	69 059 681	186 497 835	37%
<b>Total Axis 1</b>			<b>13 287 093 895</b>	<b>31 838 584 131</b>	<b>42%</b>
211	Payments to farmers in areas with handicaps (Article 36 (a) (i) of Reg. (EC) No 1698/2005)	60	4 594 389 313	6 246 772 115	74%
212	Payments to farmers in areas with handicaps in mountain areas (Article 36 (a) (ii) of Reg. (EC) No 1698/2005)	75	4 841 186 389	7 200 409 826	67%
213	Natura 2000 payments and payments linked to Directive 2000/60/EC (WFD)	22	107 971 239	451 776 171	24%
214	Agri-environment commitments	88	13 357 072 296	23 005 385 161	58%
215	Animal welfare payments	23	260 089 426	519 687 754	50%

<sup>1</sup> Source: DG AGRI, allocation as at end 2011. The calendar year expenditure cannot be compared to the 5<sup>th</sup> Financial Report of the Commission to the European Parliament and the Council on the implementation of EAFRD which is based on financial year.

<sup>2</sup> Total allocation do not include 75€million not programmed by PT (as at end of 2011)

216	Non-productive investments	39	146 813 651	571 183 820	26%
221	First afforestation of non-agricultural land	63	892 426 729	2 192 630 309	41%
222	First establishment of agroforestry systems on agricultural land	2	186 729	18 736 199	1%
223	First afforestation of non-agricultural land	26	74 020 161	327 100 024	23%
224	Natura 2000 payments	11	12 937 018	92 479 889	14%
225	Forest-environment payments	25	25 439 630	218 162 448	12%
226	Restoring forestry potential and introducing prevention actions	52	664 068 088	1 700 526 186	39%
227	Non-productive investments	61	214 660 860	746 932 381	29%
<b>Total Axis 2</b>			<b>25 191 261 530</b>	<b>43 291 782 283</b>	<b>58%</b>
311	Diversification into non-agricultural activities	61	390 814 424	1 327 371 823	29%
312	Business creation and development	36	442 017 928	2 029 433 548	22%
313	Encouragement of tourism activities	53	261 489 658	1 262 328 360	21%
321	Basic services for the economy and rural population	58	1 002 898 171	3 266 178 302	31%
322	Village renewal and development	44	1 367 247 678	3 251 866 027	42%
323	Conservation and upgrading of the rural heritage	58	392 731 769	1 293 498 677	30%
331	Training and information for economic actors operating in the fields covered by Axis 3	24	33 486 118	131 604 782	25%
341	Skills acquisition, animation and implementation	27	55 788 398	137 213 139	41%
<b>Total Axis 3</b>			<b>3 946 474 145</b>	<b>12 699 494 658</b>	<b>31%</b>
411	Implementing local development strategies - axis 1	43	60 014 662	499 862 233	12%
412	Implementing local development strategies - axis 2	22	7 028 810	163 952 486	4%
413	Implementing local development strategies - axis 3	70	693 901 763	3 948 029 004	18%
421	Implementing cooperation projects	37	16 842 100	281 635 728	6%
431	Running the local action group, acquiring skills and animating the territory	85	302 251 571	982 080 048	31%
<b>Total Axis 4</b>			<b>1 080 038 906</b>	<b>5 875 559 499</b>	<b>18%</b>
511	Technical assistance		522 004 590	1 891 553 191	28%
611	Direct Payments (RO and BG)		437 324 358	645 581 697	68%
<b>Grand Total</b>			<b>44 464 197 424</b>	<b>96 242 555 459</b>	<b>46%</b>

**Table 2: HC/EERP EAFRD expenditure realized 2007-2011, HC and EERP allocation  
2007-2013  
and uptake level (million €)<sup>3</sup>**

<b>HC and EERP challenges</b>	<b>EAFRD Expenditure (2010-2011)</b>	<b>Allocation (2010-2013)</b>	<b>Uptake level</b>
Climate change	369.2	704.2	52%
Renewable energy	22.7	275.4	8%
Water management	163.9	1 332.2	12%
Biodiversity	498.5	1 542.0	32%
Restructuring dairy sector	172.9	715.6	24%
Innovative approaches (new challenges)	1.4	15.8	9%
Broadband infrastructure	43.1	360.4	12%
<b>Total</b>	<b>1 271.7</b>	<b>4 945.6</b>	<b>26%</b>

<sup>3</sup> Source: DG AGRI, allocation as at 2010. Indicative expenditure based on CMEF monitoring data 2011

**Table 3(a): Monitoring output indicators 2007-2011, and targets 2007-2013**  
**(including HC as at end 2011) <sup>4</sup>**

Code	Measure	Output	Unit	Value (2007-2011)	Targets 2007-2013	% target
111	Vocational training and information actions	Number of participants in training	N.	2 420 490	3 478 471	70%
112	Setting up of young farmers	Number of assisted young farmers	N.	99 930	185 014	54%
113	Early retirement	Number of beneficiaries	N.	27 032	41 780	65%
		Number of hectares released	Ha	445 037	606 556	73%
114	Use of advisory services	Number of farmers supported	N.	90 052	554 549	16%
		Number of forest holders supported	N.	1 619	40 251	4%
115	Setting up of management, relief and advisory services	Number of newly set up management, relief or advisory services	N.	556	775	72%
121	Modernisation of agricultural holdings	Number of farm holdings that received investment support	N.	219 649	598 139	37%
122	Improvement of the economic value of forests	Number of forest holdings that received investment support	N.	12 601	59 459	21%
123	Adding value to agricultural and forestry products	Number of enterprises supported	N.	15 768	35 242	45%
124	Cooperation for development of new products, processes and technologies	Number of cooperation initiatives supported	N.	1 416	5 712	25%
125	Infrastructure related to the development and adaptation of agriculture and forestry	Number of operations supported	N.	28 196	46 780	60%
126	Restoring agricultural production potential damaged by natural disasters and prevention actions	Supported area of damaged agricultural land	Ha	351 866	1 412 591	25%

<sup>4</sup>

Source: RDIS IDIM 2011, outputs indicators for commitments made from 2007 onwards

131	Meeting standards based on Community legislation <sup>5</sup>	Number of beneficiaries	N.	16 344	66 311	25%
132	Participation of farmers in food quality schemes	Number of supported farm holdings participating in a quality scheme	N.	224 134	284 384	79%
133	Information and promotion activities	Number of supported actions	N.	4 534	6 008	75%
141	Semi-subsistence farming	Number of semi-subsistence farm holdings supported	N.	39 299	105 422	37%
142	Producer groups	Number of supported producer groups	N.	888	2 132	42%
LFA	Support to Less Favoured Areas	Number of supported holdings in LFAs	N.	2 800 00	3 000 000	93%
		Supported agricultural land in LFAs	Ha	52 800 000	55 000 000	96%
213	Natura 2000 payments and payments linked to Directive 2000/60/EC (WFD)	Number of supported holdings in Natura 2000 areas/under WFD	N.	51 065	63 123	81%
		Supported agricultural land under Natura 2000/under WFD	Ha	898 289	1 332 965	67%
214	Agri-environment payments	Number of farm holdings	N.	2 515 434	3 154 024	80%
		Physical area under agri-environmental support	Ha	41 000 000	47 000 000	87%
215	Animal welfare payments	Number of animal welfare contracts	N.	144 653	169 383	85%
216	Non-productive investments	Number of farm holdings	N.	16 864	107 918	16%
221	First afforestation of agricultural land	Number of beneficiaries receiving support	N.	29 655	111 921	26%
		Number of ha afforested land	Ha	165 634	573 440	29%
222	First establishment of agroforestry systems on agricultural land	Number of beneficiaries	N.	64	3 422	2%
		Number of ha under new agroforestry systems	Ha	637	41 236	2%
223	First afforestation of non-agricultural land	Number of beneficiaries receiving support	N.	5 368	27 652	19%
		Number of ha of afforested land	Ha	48 348	190 792	25%

<sup>5</sup> FR not included

224	Natura 2000 payments	Number of forest holdings receiving aid in Natura 2000 area	N.	7 328	35 449	21%
		Supported forest land (ha) in Natura 2000 area	Ha	117 580	303 161	39%
225	Forest-environment payments	Number of forest holdings receiving support	N.	6 903	71 219	10%
		Physical forest area under forest environment support	Ha	246 938	898 015	27%
226	Restoring forestry potential and introducing prevention actions	Number of prevention/restoration actions	N.	43 303	128 575	34%
227	Non-productive investments	Number of supported forest holders	N.	61 786	118 775	52%
311	Diversification into non-agricultural activities	Number of beneficiaries	N.	18 961	62 117	31%
312	Business creation and development	Number of micro-enterprises supported/created	N.	19 139	77 397	25%
313	Encouragement of tourism activities	Number of new tourism actions supported	N.	10 539	34 656	30%
321	Basic services for the economy and rural	Number of supported actions	N.	35 372	87 473	40%
322	Village renewal and development	Number of villages where actions took place	N.	27 697	27 619	100%
323	Conservation and upgrading of the rural heritage	Number of rural heritage actions supported	N.	48 399	71 342	68%
331	Training and information	Number of economic actors participating	N.	364166	758 664	48%
341	Skills acquisition, animation and implementation	Number of actions supported	N.	5 583	5 225	107%
414 412 413	Implementing local development strategies	Number of projects financed by LAGs	N.	54 810	220 222	25%
421	Implementing cooperation projects	Number of cooperation projects	N.	1 327	4 606	29%
431	Running the local action group, acquiring skills and animating the territory	Number of actions supported	N.	84 260	89 895	94%

**Table 3(b) Selection of main relevant target indicators (outputs) per priority for the HC/EERP budget defined in the Rural Development Programmes<sup>6</sup> and realization by the end of 2011**

<i>Priority/indicators</i>	<i>Unit of measure</i>	<i>Targets</i>	<i>Values (2011)</i>	<i>%</i>
<b>Climate Change</b>				
Improvement of energy efficiency	total volume of investments <sup>7</sup> (million EUR)	243	103	30%
Improve efficiency of nitrogen fertiliser use	total volume of investments (million EUR)	104		
Soil management practices (measure 214)	N of ha supported (million ha)	1.4	0.5	36%
Extensive livestock (measure 214)	N of ha supported (million ha)	2.6	2	77%
Afforestation and the establishment of agro-forestry system	N of ha supported (ha)	10,000	1263	13%
<b>Renewable energy</b>				
Installations/infrastructure for renewable energy using biomass and other renewable energy sources (solar and wind power, geothermal)	total volume of investments (million EUR)	248	129	26%
Processing of agricultural/forest biomass for renewable energy	total volume of investments (million EUR)	197		
Biogas production using organic waste (on farm and local production)	total volume of investments (million EUR)	62		
<b>Water management</b>				
Water storage (including water overflow areas) – Axis 1	total volume of investments (million EUR)	184	186	25%

<sup>6</sup> As at beginning of 2010

<sup>7</sup> Total amount (= the sum of all public and private expenditure) of all the tangible and/or intangible investments related to the supported operations.



Water savings technologies (e.g. efficient irrigation systems) – Axis 1	total volume of investments (million EUR)	568		
Westland restoration (measure 216)	total volume of investments (million EUR)	119	12.3	10%
Meandering rivers (measure 323)	total volume of investments (million EUR)	71	13.4	19%
<b>Biodiversity</b>				
Extensive forms of livestock management (measure 214)	N of ha supported (million ha)	3.60	2.7	75%
Integrated and organic production (measure 214)	N of ha supported (million ha)	1.58	0.77	49%
Land use change (extensive grassland management) (measures 216 and 323 )	total volume of investments (million EUR)	76	29	38%
<b>Restructuring of dairy sector</b>				
Investments related to dairy production (measure 121)	total volume of investments (million EUR)	1,116	724	65%
Improvements in processing and marketing related to dairy sector (measure 123)	total volume of investments (million EUR)	270	41	15%
<b>Broadband infrastructure</b>				
Creation and enabling of access to broadband infrastructure	total volume of investments (million EUR)	383	94	25%
Upgrade of existing broadband infrastructure	total volume of investments (million EUR)	175	2	1%
Laying down passive broadband infrastructure	total volume of investments (million EUR)	129	15	12%

**Table 3(c): Monitoring result indicators 2007-2011, and targets 2007-2013<sup>8</sup>**

	result indicators		2007-2011 values	Targets <sup>9</sup>
<b>AXIS 1</b>	Number of participants that successfully ended a training activity related to agriculture and/or forestry		1 353 000 (49%)	2 774 000
	Increase in GVA in supported holdings/enterprises ('000 EUR)		7 252 000 (29%) <sup>10</sup>	25 000 000
	Number of holdings / enterprises introducing new products and/or new techniques		73 600 (29%)	252 000
	Number of farms entering the market		2 679 (3%)	82 000
	Value of agricultural production under recognized quality label/standards (millions of euros)		13 200 (45%) <sup>11</sup>	29 200
<b>Axis 2</b>	Agricultural and forestry areas under successful land management contributing to (ha) <sup>12</sup>	Biodiversity	50 300 000 (>100%)	49 800 000
		Water quality	31 600 000 (91%)	34 600 000
		Climate change	31 800 000 (>100%)	23 400 000
		Soil quality	39 500 000 (>100%)	32 000 000
		Avoidance marginalisation	47 700 000 (92%)	52 000 000
<b>Axis3</b>	Increase in Non-agricultural gross value added in supported business ('000 EUR)		1 147 000 (28%)	4 000 000
	Gross number of jobs created		20 162 (8%)	241 000
	Additional number of tourist visits	Number of day visitors	4 121 911 (43%)	9 500 000
		Number of overnight stays	1 722 051 (20%)	8 300 000
	Population in rural areas benefiting from improved services		62 000 000 (70%)	88 000 000
	Increase in internet penetration in rural areas ( nbr of persons)		3 491 911 (37%)	9 300 000
	Number of participants that successfully ended a training activity in the field of axis 3		244 007 (57%)	425 000

<sup>8</sup>Source: AGRI, outputs indicators for commitments made from 2007 onwards (including HC as at end 2012)

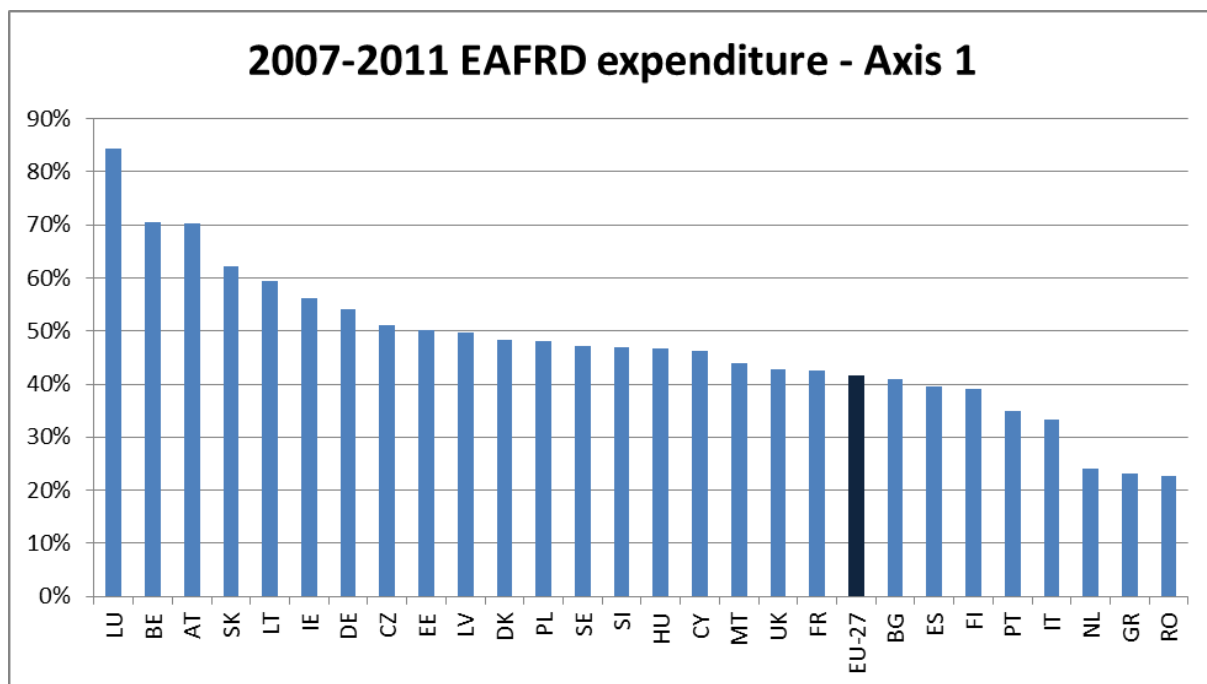
<sup>9</sup> BG and ES CYL non included

<sup>10</sup> EL, HU and PT non included

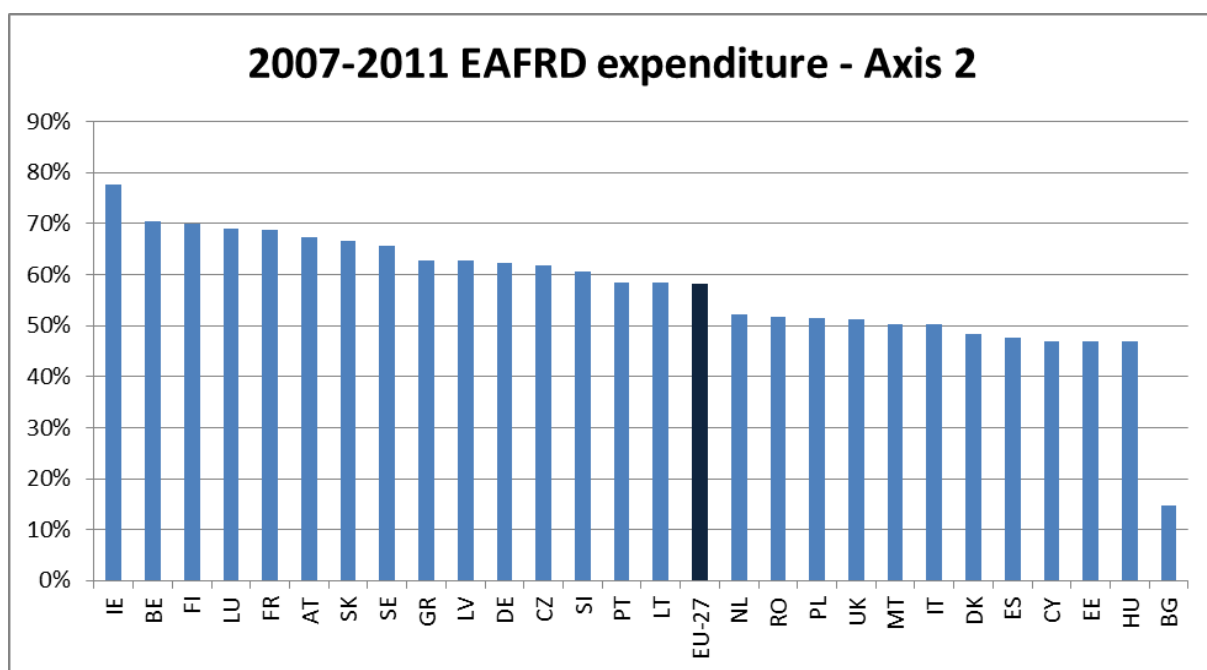
<sup>11</sup> ES CAT RDP not included

<sup>12</sup> LT, UK, IE, ES, PL, SK: data from 2010 APR

**Table 4: Overall execution of the EAFRD budget by the end of 2011 compared to the overall 2007-2013 allocation, axis per axis<sup>13</sup>**



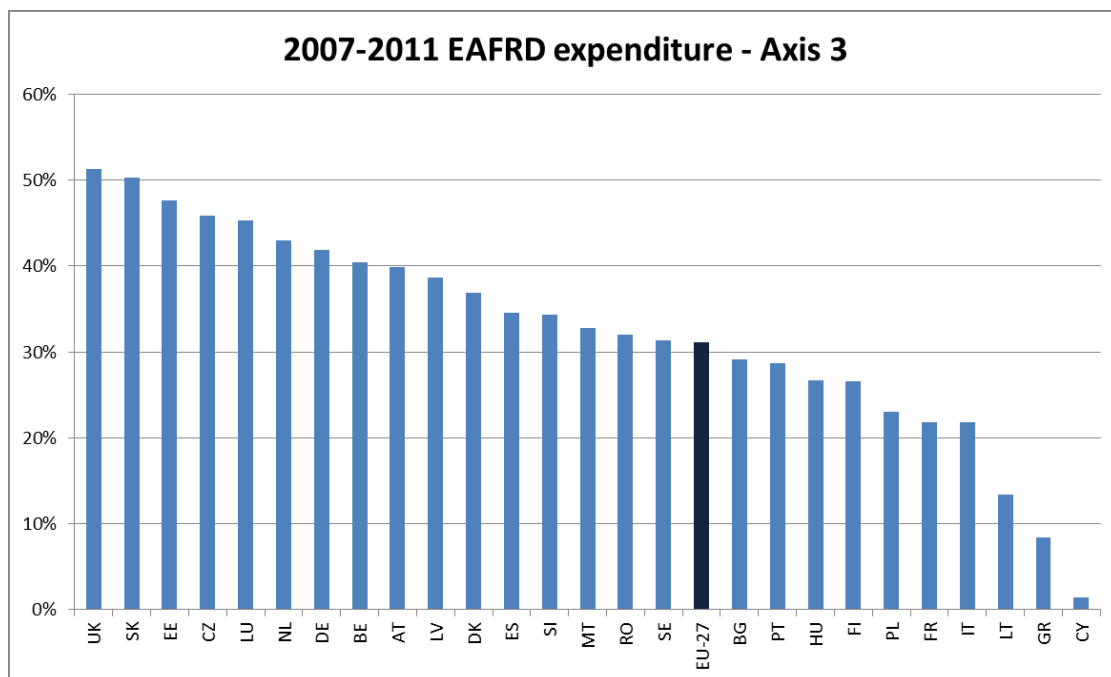
EU-27 average: 42%



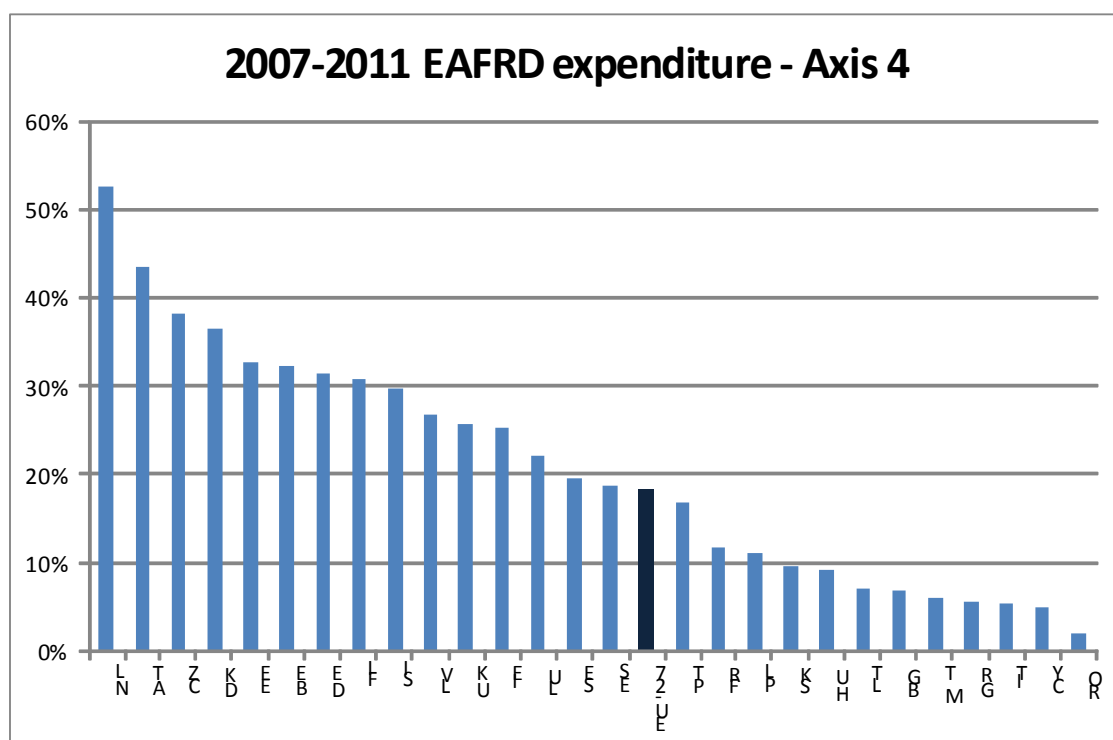
EU-27 average: 58%

<sup>13</sup>

Sources: DG AGRI



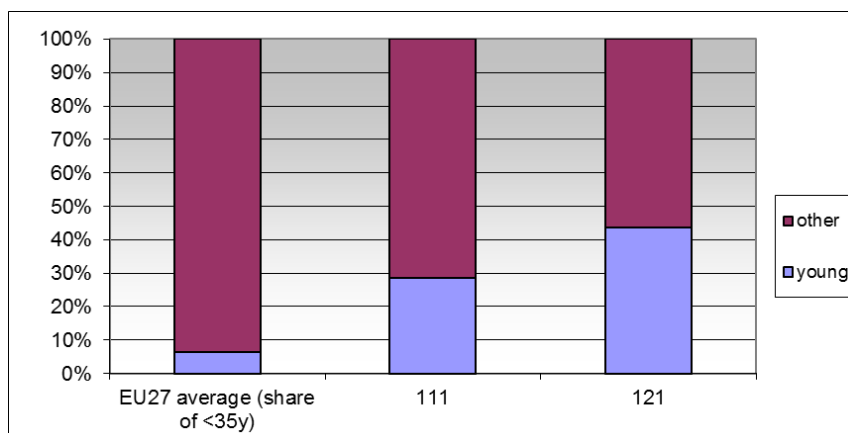
EU-27 average: 31%



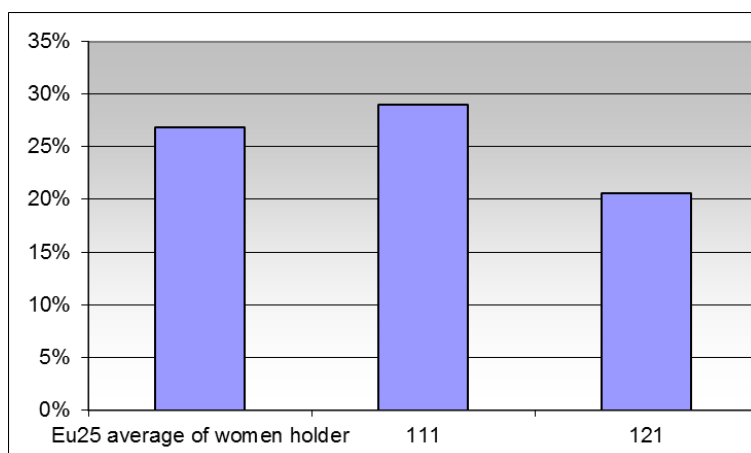
EU-27 average: 18%

**Table 5: axis 1 and axis 3 implementation break down according gender and age as laid down in the Art. 81 of the Reg. (EC) No 1698/2005<sup>14</sup>**

**Share of the beneficiaries under 40 years for the measures training (111) and modernisation (121) compared to the EU27 share of young holders**

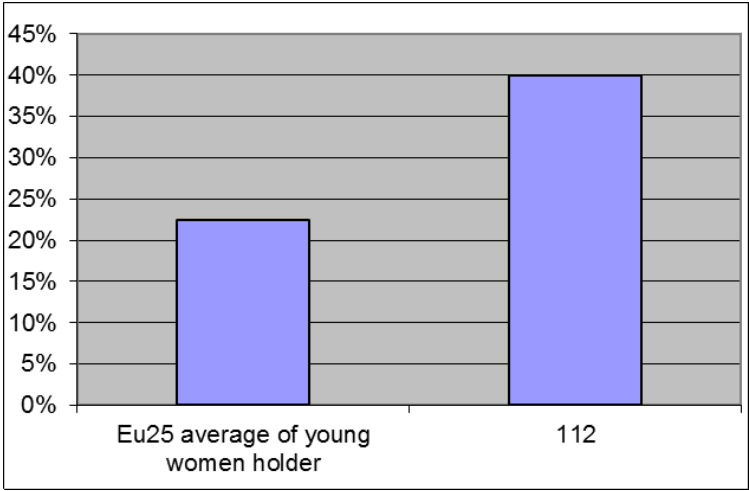


**Share of women beneficiaries for the measures training (111) and modernisation (121) compared to the EU-25 share of women holders for the whole sector<sup>15</sup>**

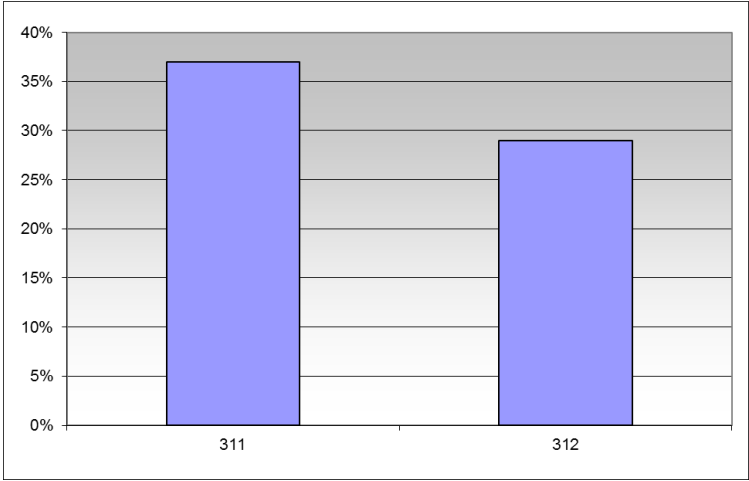


<sup>14</sup> Source: RDIS IDIM 2011, outputs indicators for commitments made from 2007 onwards  
<sup>15</sup> Eurostat

**Share of women beneficiaries for the measure young farmer (112) compared to the EU-25 share of young women holders for the whole sector<sup>16</sup>**



**Share of women beneficiaries for the measures diversification (311) and micro enterprises support (312)**



<sup>16</sup>